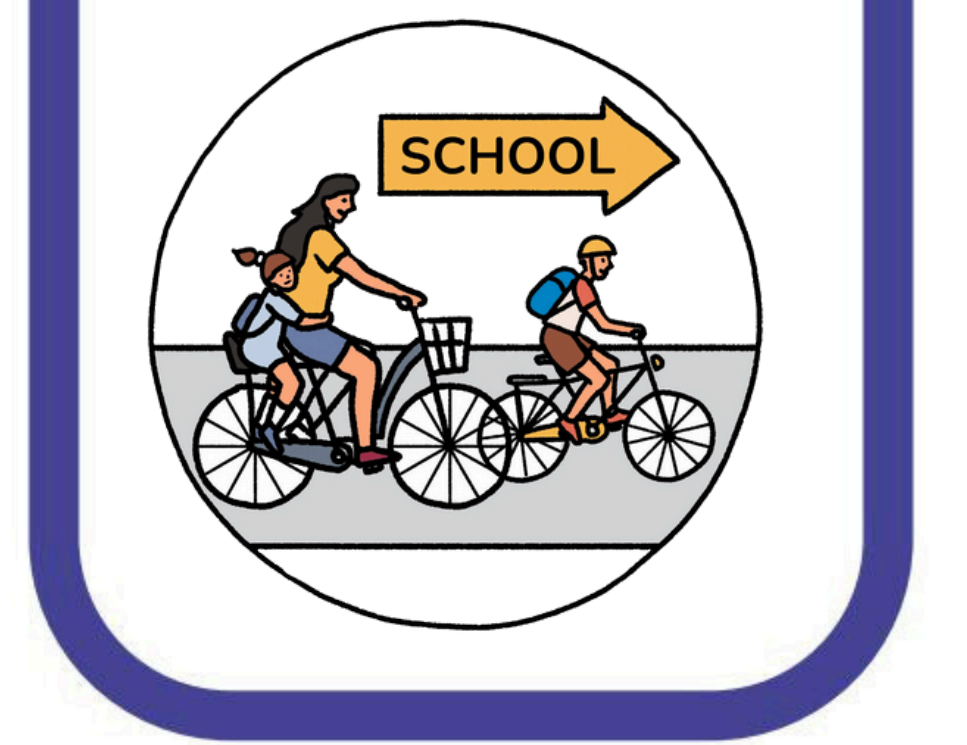


# Schools Count!



## Short Name

Schools Count!

## Formal Name

Schools Count!

## Contact Person

Elke Franchois

## Institution/Organisation

Mobiel 21

## Website

<https://www.mobiel21.be/en/focus-areas/safe-school-environments-and-routes>

## Social Media

TBC



Introducing the child perspective to tackle sustainable mobility and societal challenges in local neighbourhoods of the City of Genk (BE)



## Summary

In Schools Count! children are seen as stakeholders and fully-fledged citizens scientists. They are included to collect, analyse and understand Telraam traffic data, and to propose measures for their school environment. They learn what sustainable mobility and climate action covers through educational materials and how they can apply it to their local context. The children are not just study objects but carry out the study together with the other stakeholders. The child perspective reflects an inclusive approach to tackle societal challenges in school environments and on school routes. Within the developed 6-step approach, we face challenges in the latter phases: translating the child perspective into practical measures that strengthen the permanent implementation of sustainable mobility solutions in a school environment and on school routes.

Schools Count! intends to engage children (aged 9-12) and adults from selected school communities in the City of Genk (Belgium). These communities consist of families with a migration background who lack access to specific modes of transport (such as bikes or school buses) or cannot afford a transport mode. Together, we are working towards mobility experiments that are developed, tested, monitored and evaluated. The aim is to establish the link between the child's perspective, adult views, applicable legislative frameworks and the city's mobility strategy to permanently implement mobility measures. The ultimate goal is to define preconditions for a successful Schools Count! approach, particularly in the final phases of the process.